

JYHY28000_(2V800Ah)

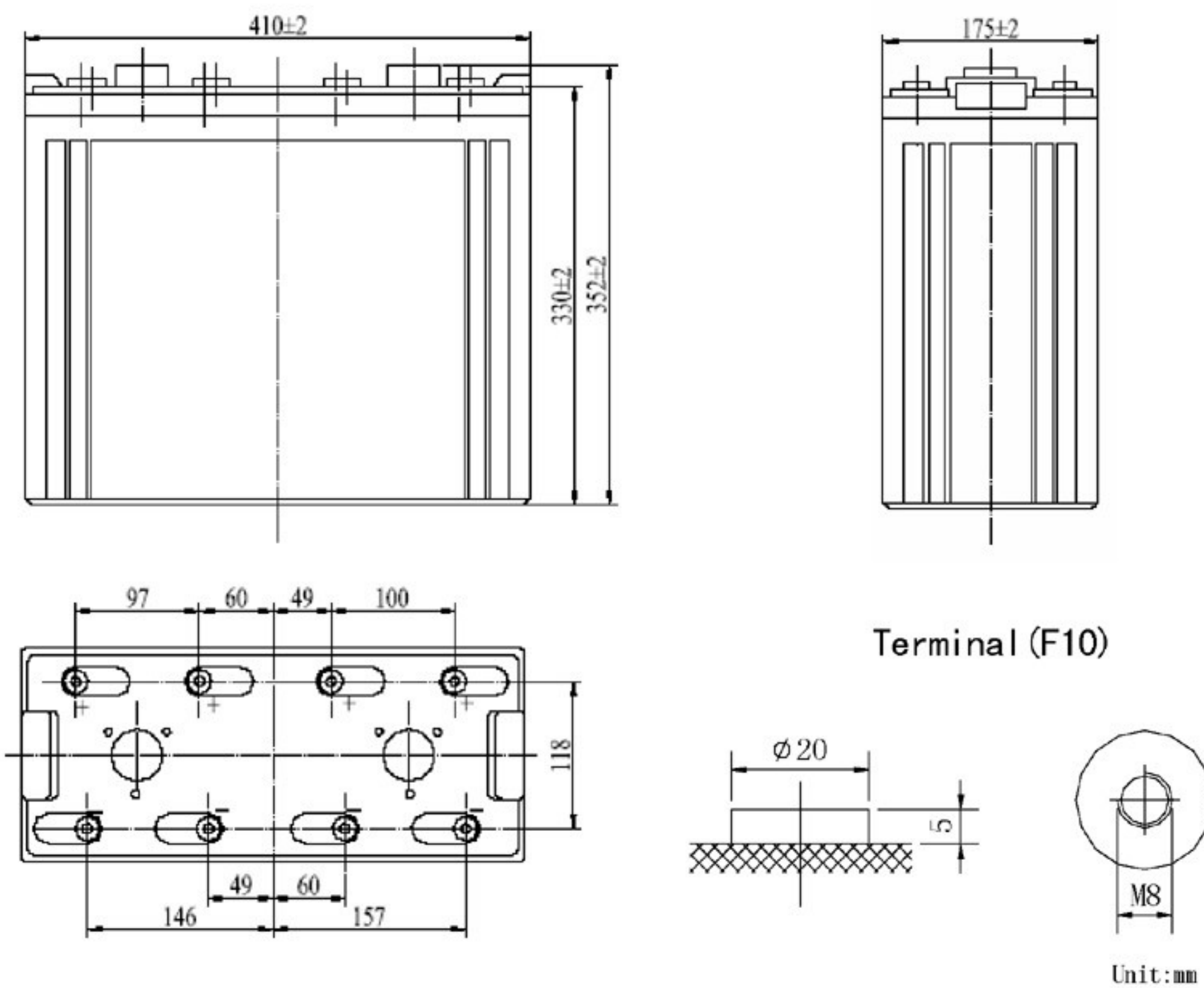
GENERAL FEATURES

- Absorbent Glass Mat (AGM) technology for efficient gas recombination of up to 99% and freedom from electrolyte for air transport-complies with LATA/ICAO Special provision A67.
- Not restricted for air transport-complies with LATA/ICAO Special Provision A67.
- UL-recognized component.
- Can be mounted in any orientation.
- Computer designed lead, calcium tin alloy grid for high power density.
- Long service life, float or cyclic applications,
- Maintenance-free operation.
- Low self discharge.
- Case and cover available in both standard and flame retardant ABS.

SPECIFICATION

Nominal voltage	2V	Dimensions	Total Height	14.45inches(367mm)
Rated capacity (10 hour rate)	800Ah		Height	12.99inches(330mm)
Number of cell	1		Length	16.14inches(410mm)
Approx. Weight (Kg / lbs)	53/116.8		Width	6.89inches(175mm)

Battery Dimensions



Total height with removeable cover: 367

Constant power discharge ratings-watts per cell at 25°C(77° F)

End Point Volts/Cell	5min	10min	15min	30min	45min	1h	2h	3h	5h
1.60V		2394	1995	1497	1133	936	632	451	303
1.65V		2255	1887	1422	1081	896	613	432	298
1.70V		2115	1777	1346	1027	855	594	413	292
1.75V		1975	1667	1267	971	812	575	394	286
1.80V		1837	1557	1189	915	769	556	375	271

Characteristic

Capacity 77° F(25°C)	20 hour rate (41A、1.75V)	820Ah
	10 hour rate (80A、1.75V)	800Ah
	5 hour rate (140A、1.75V)	700Ah
	3 hour rate (210A、1.70V)	630Ah
	1 hour rate (500A、1.60V)	500Ah
	1C (800A、1.60V)	34min
Internal Resistance	Full charged Battery 77° F(25°C) : 1m Ω	
Capacity affected by Temperature (20 hour rate)	104° F(40°C)	102%
	77° F(25°C)	100%
	32° F(10°C)	85%
	5° F(-15°C)	65%
Self-Discharge 68° F(20°C)	Capacity after 3 month storage	90%
	Capacity after 6 month storage	80%
	Capacity after 12month storage	60%
Max. discharge current 77° F(25°C) : 2000A(5S)		
Charge (Constant Voltage)	Float: 2.25~2.30 V/77° F(25°C)	
	Cycle: 2.35~2.45 V/77° F(25°C) Max. Current: 160A	

